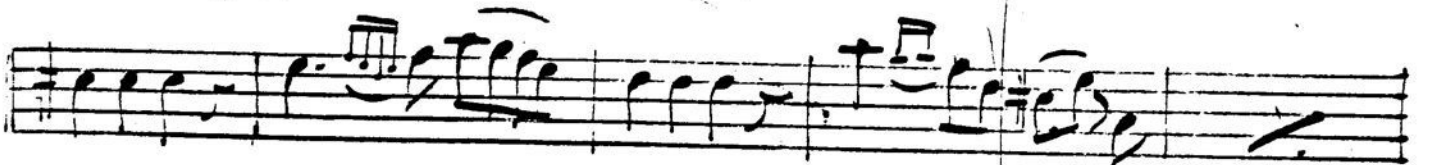
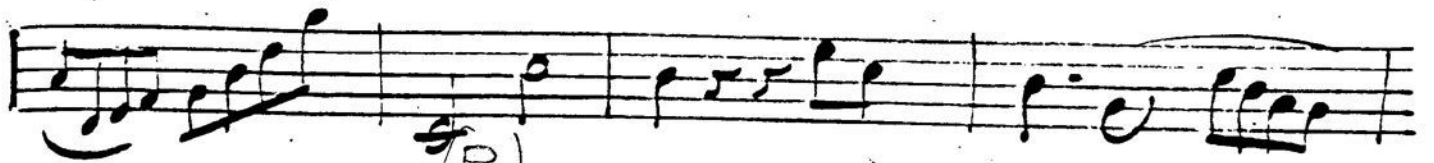
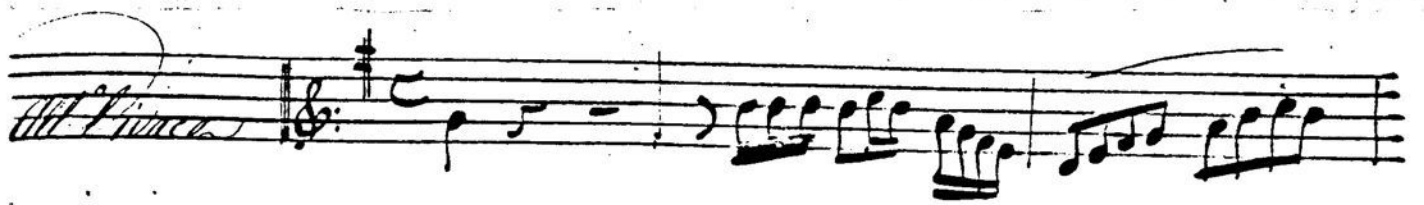


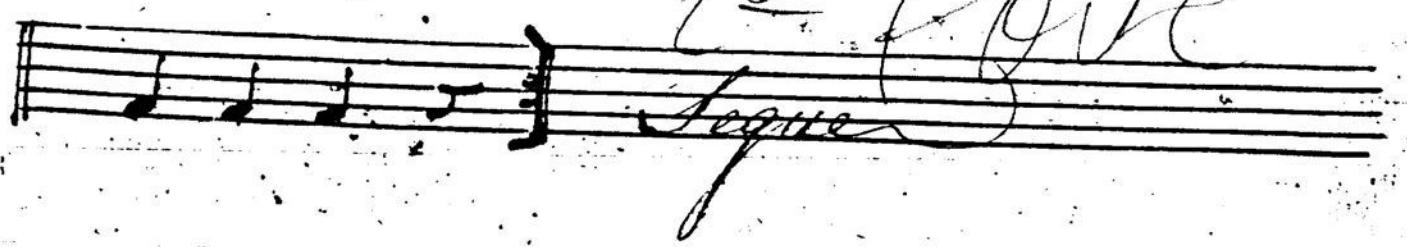
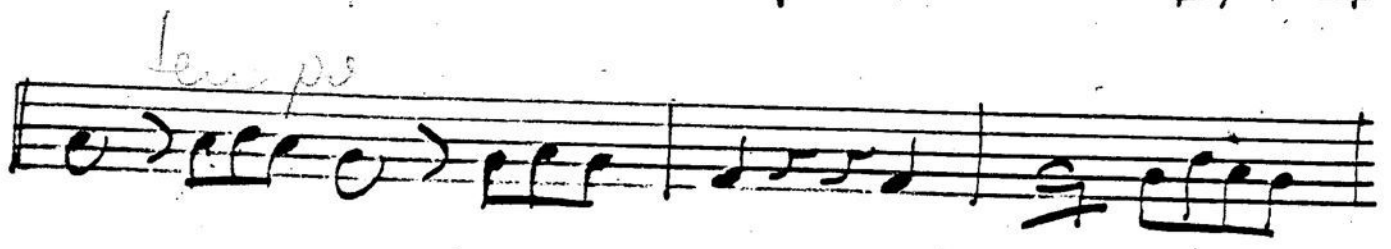
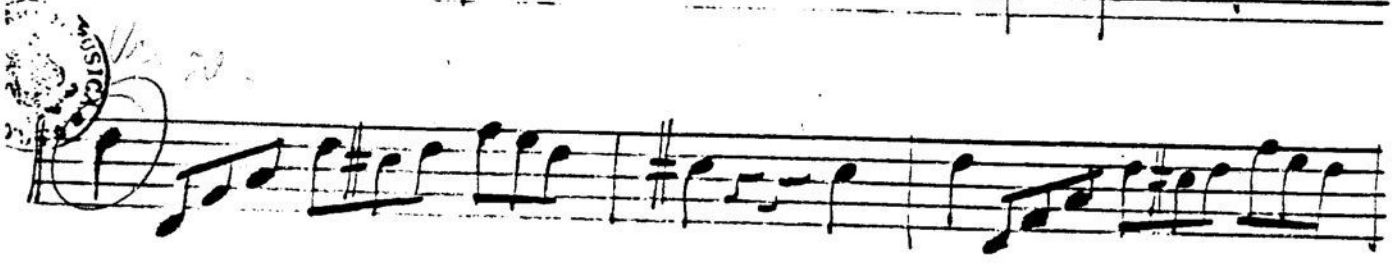


*Cloro Secondo*

*Flauto Secondo*



PIANO



A handwritten musical score consisting of ten staves. The notation includes various rhythmic values, accidentals, and phrasing marks. The first staff begins with a treble clef and a key signature of one sharp (F#). The second staff has a dynamic marking of *p*. The third staff features a *rit.* marking. The fourth staff is marked with *TORNTO!* and a *2<sup>o</sup> riv.* marking. The score concludes with a double bar line and repeat dots at the end of the tenth staff.

Handwritten musical notation on a single staff, featuring a treble clef, a key signature of one sharp (F#), and a common time signature (C). The notation includes quarter notes, eighth notes, and sixteenth notes, with some notes beamed together.

Handwritten musical notation on a single staff, continuing the piece with various rhythmic values and rests.

Handwritten musical notation on a single staff, showing a change in rhythm and melodic contour.

Handwritten musical notation on a single staff, featuring a dense sequence of notes.

Handwritten musical notation on a single staff, characterized by rapid sixteenth-note passages.

Handwritten musical notation on a single staff, with complex rhythmic patterns and many beamed notes.

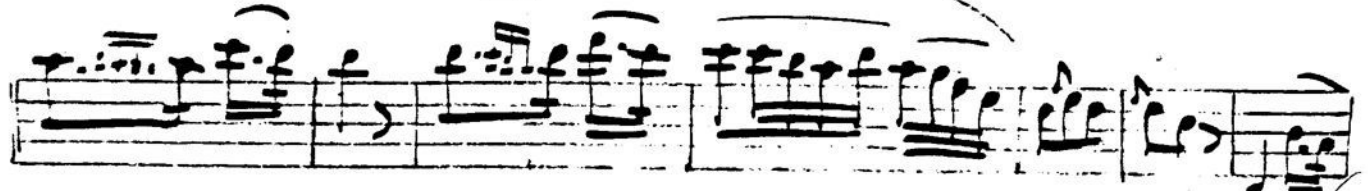
Handwritten musical notation on a single staff, featuring a treble clef and a key signature of one sharp.

Handwritten musical notation on a single staff, with a circled section of notes at the end of the staff.

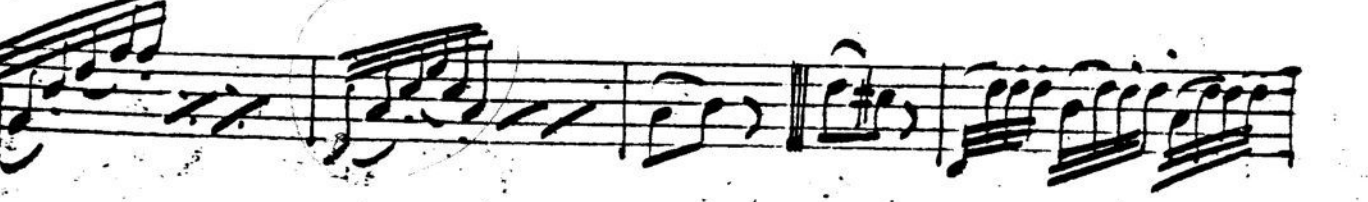
Handwritten musical notation on a single staff, ending with a double bar line.

Handwritten musical notation on a single staff, concluding with the word "Segue" written in cursive.

Adagio



*mf*



LA

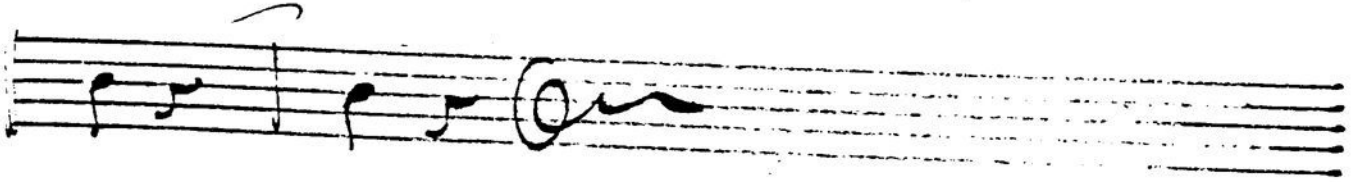
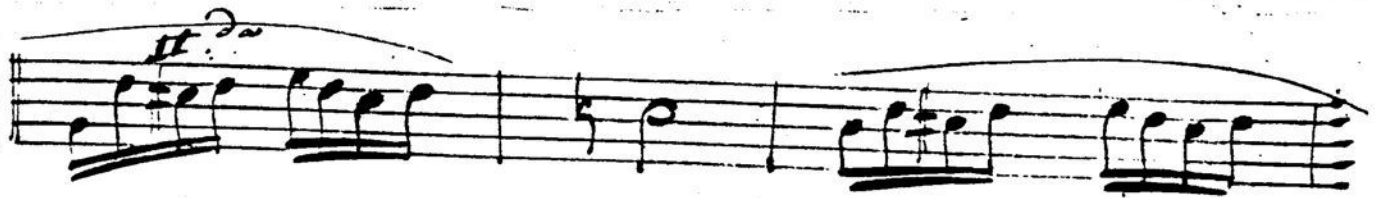
A handwritten musical score consisting of ten staves. The notation is dense, featuring many beamed notes and rests. The first staff begins with a treble clef and a key signature of one sharp (F#). The music is written in a cursive, historical style. A circular stamp is visible on the right side of the fifth staff, containing the text "BIBLIOTECA DI ...".

Segue

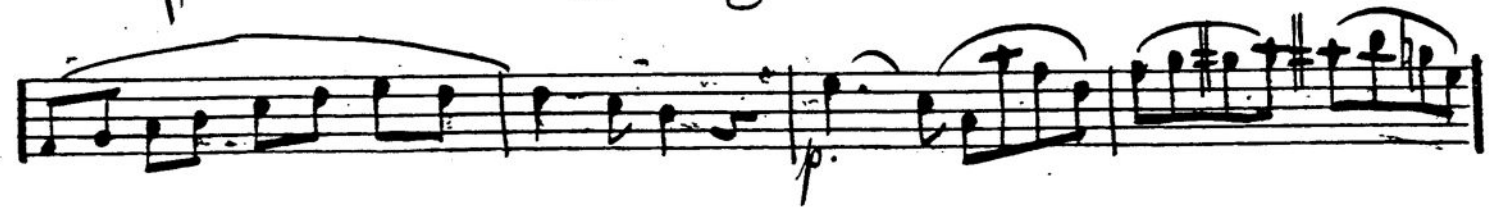
*Allegro*

*Fondo*





*Alligo Vivace* 























A handwritten musical score consisting of 12 staves. The notation includes various rhythmic values such as eighth and sixteenth notes, as well as rests. The key signature is one sharp (F#), and the time signature is 3/4. The score features several triplet markings, indicated by the number '3' above groups of notes. The music concludes with a double bar line and the word 'Segue' written in a cursive hand at the bottom right.

This image shows a handwritten musical score consisting of ten staves of music. The notation includes various rhythmic values, accidentals, and dynamic markings. The first staff begins with a treble clef and a key signature of one flat (B-flat). Above the first three measures of the first staff are the letters 't', 't', and 't'. The second staff continues the melody with similar markings. The third staff features a key signature change to two flats (B-flat and E-flat) above the first measure. The fourth staff starts with a bass clef and a key signature of one sharp (F-sharp), with a handwritten note 'do?' above the first measure. The fifth staff contains complex chordal structures with many accidentals. The sixth staff has a long slur over the first four measures. The seventh and eighth staves continue the melodic line with various phrasing slurs. The ninth staff includes a handwritten '16' above the first measure. The tenth and final staff features a key signature change to two sharps (F-sharp and C-sharp) and contains several triplet markings (indicated by the number '3' above groups of notes).

This image shows a handwritten musical score consisting of 12 staves. The notation includes various rhythmic values such as eighth, sixteenth, and thirty-second notes, as well as rests and ties. A key signature of one sharp (F#) is indicated at the beginning of the first staff. The score is characterized by several triplet markings, indicated by a '3' above a bracketed group of notes. The handwriting is fluid and appears to be a working draft or a personal manuscript. The paper shows some signs of age, including slight discoloration and some ink bleed-through from the reverse side.

Allegro 





Handwritten musical notation on a five-line staff, with the text "Vierge Rondo" written in cursive below the notes.

# Sonata

Allegro. 

