

Schranck No: II
18. Fach 33. Lage.

Co V^{mo} Oboe e Basso.
Del Sig. Melanite.



Musica	
2392	
Or	45

Städt.
Landes-
bibl.

1

URFILM 19/1976 № 339
Sächsische Landesbibliothek in Dresden

Handschrift Nr. 2392/Q/45

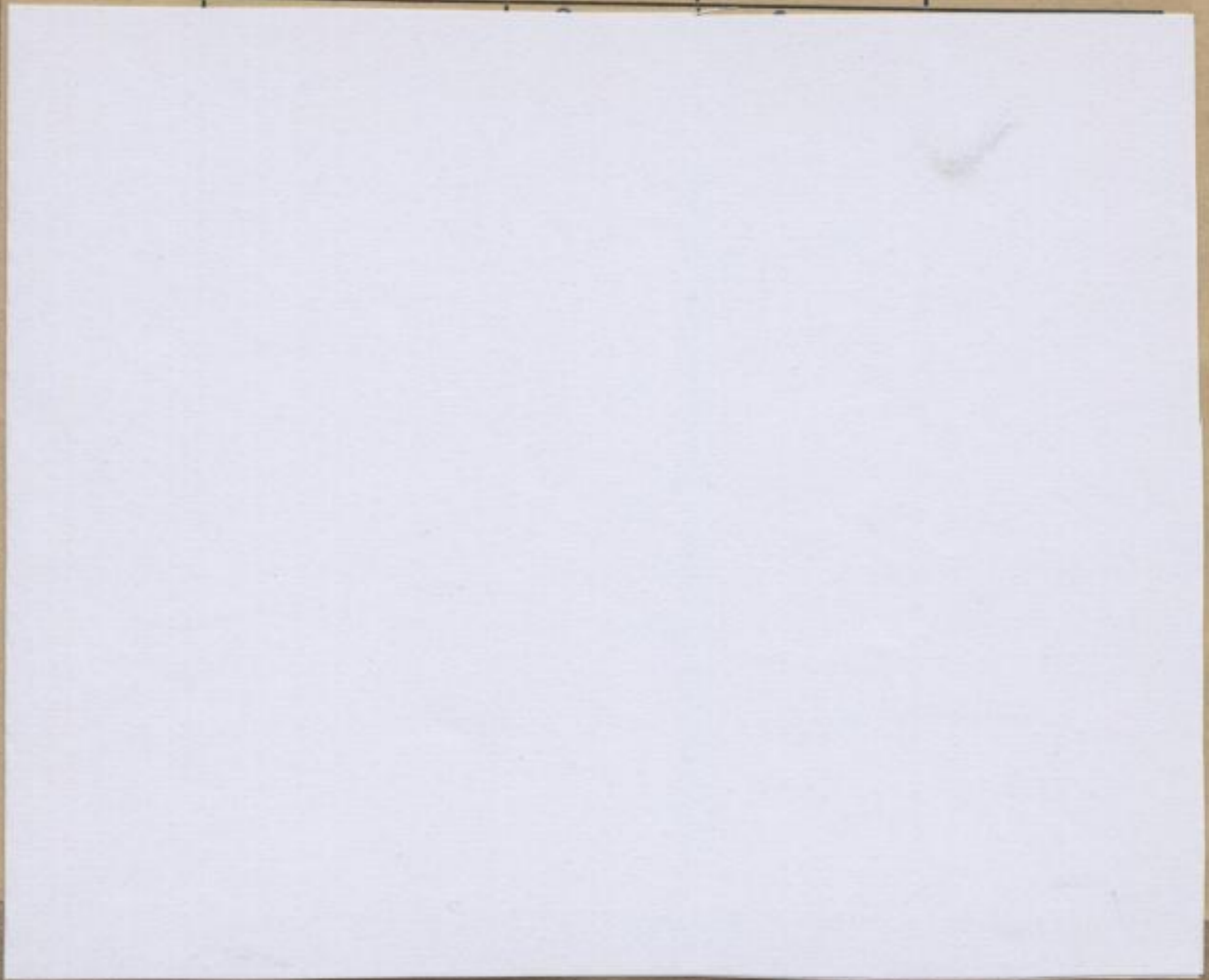
Dieser Band wurde 1999 durch Bestrahlung sterilisiert. Verfärbungen stellen keine Gefahr dar.

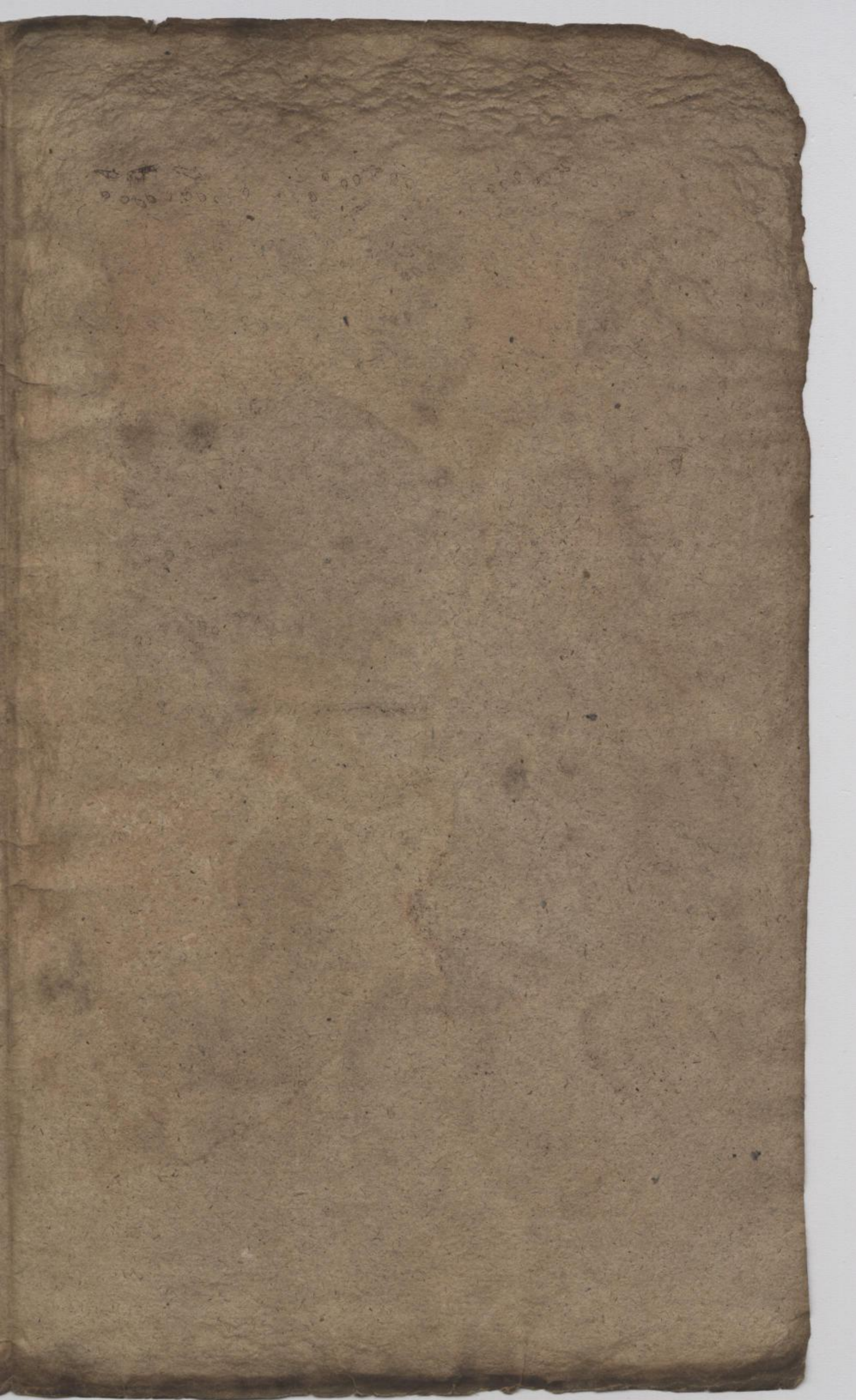
Die Benutzung dieser Handschrift ist nur unter der Bedingung gestattet, daß der Entleiher der hiesigen Bibliothek ein Stück seiner auf die Handschrift bezüglichen Veröffentlichung geschenkweise überläßt, sofern die Bibliotheksverwaltung nicht ausdrücklich auf die Überlassung verzichtet. Zum Durchzeichnen oder zur Herstellung von Lichtbildern ist besondere Erlaubnis einzuholen.

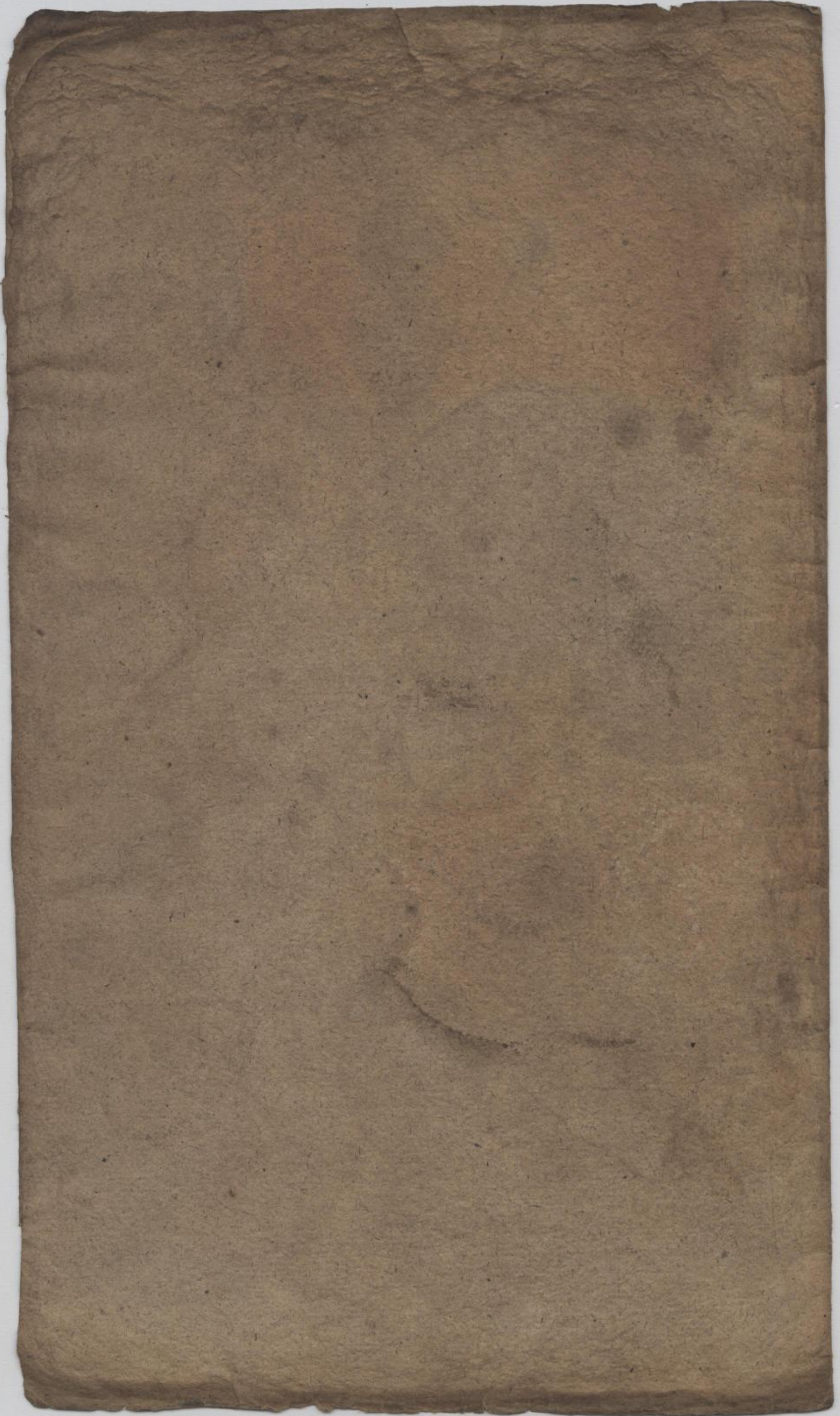
Belehrende Auskünfte oder Hinweise auf Veröffentlichungen über diese Handschrift, die der Bibliothek noch unbekannt sind, werden dankbar entgegengenommen.

Benutzer der Handschrift seit 1959

Datum	Name, Stand und Wohnung des Benutzers	Ort der Benutzung	Art der Benutzung (nur eingesehen?, ganz od. teilw. abgeschrieben?, ganz oder teilweise verglichen?)	Zweck der Benutzung (Ist Veröffentlichung beabsichtigt und in welcher Form?)
-------	---------------------------------------	-------------------	--	--







Violino

Allegro.

Allegro.

654

Mus. 2392-Q-45



Handwritten initials or signature

Allegro.

2

5

Allegro

4 3

Continuo

Handwritten musical notation on two staves. The first staff begins with a treble clef and a common time signature. The second staff begins with a bass clef. The notation includes various rhythmic values and accidentals.

Handwritten musical notation on two staves. The first staff begins with a treble clef and a common time signature. The second staff begins with a bass clef. The notation includes various rhythmic values and accidentals.

Handwritten musical notation on two staves. The first staff begins with a treble clef and a common time signature. The second staff begins with a bass clef. The notation includes various rhythmic values and accidentals.

Handwritten musical notation on two staves. The first staff begins with a treble clef and a common time signature. The second staff begins with a bass clef. The notation includes various rhythmic values and accidentals.

Handwritten musical notation on two staves. The first staff begins with a treble clef and a common time signature. The second staff begins with a bass clef. The notation includes various rhythmic values and accidentals.

Handwritten musical notation on two staves. The first staff begins with a treble clef and a common time signature. The second staff begins with a bass clef. The notation includes various rhythmic values and accidentals.

Handwritten musical notation on two staves. The first staff begins with a treble clef and a common time signature. The second staff begins with a bass clef. The notation includes various rhythmic values and accidentals.

Mus. 2392-Q-45

(P. 65a)



3



225

A page of handwritten musical notation on aged, yellowed paper. The score consists of ten staves of music. The notation includes various note values (quarter, eighth, and sixteenth notes), rests, and clefs. There are several sharp signs (#) indicating key signatures. The handwriting is in a historical style, possibly from the 18th or 19th century. The paper shows signs of age, including a large brown stain in the lower-left quadrant and some fading of the ink.

The lower half of the page contains several staves of music that are mostly illegible due to fading and the age of the paper. There are some faint markings and what appears to be a large, dark smudge or stain in the lower-left area. The notation is very light and difficult to discern.